

CHAPEL SPRINGS LOCATED IN HIGHLAND VILLAGE

AVAILABLE INVENTORY HOMES



Sales Consultant: Ginger Heise

Contact Info: Office: 972-318-3802

Cell: 469-767-4735

email: gingerheise@verizon.net



\$434,114 reduced \$419,000

2822 SPRING OAKS DRIVE: Thornebrooke floor plan: 3700 sqft, 4 bedrooms (master down), 3.5 bathrooms, 3-car garage, large game room, spacious family room with 2-story floor to ceiling stone fireplace, His & Her separate offices, covered patio. Granite tops in kitchen, master bath and downstairs full bath, hand scraped wood flooring in entry & family room. Stainless appliances, double oven. 6-room audio prewire, flat screen TV prewire(s),

HERS rating index: 73!

MOVE-IN READY!



\$381,819

2819 MILLINGTON DRIVE: New 1-story "Carson" floor plan: 2919 sqft, 3 bedrooms, 2.5 bathrooms, study, formal dining, open kitchen/nook to family room, extended covered patio with fireplace, 2-car garage. Granite tops in kitchen and all bathrooms, extensive hand scraped wood flooring, stainless appliances, double oven (top oven is convection) & 5-burner gas cooktop. **preliminary HERS rating index: 64**



2802 SPRING HOLLOW: NEW "Chambers" floor plan: 3489 sqft, 4 bedrooms, 3.5 bathrooms, over sized 2-car garage, game room, spacious family room with floor to ceiling stone fireplace, stain grade executive study, covered patio with pool bath entrance. Granite tops in kitchen and all bathrooms, hand scraped wood flooring in entry & family room. Stainless appliances, double oven (top oven is convection) & 5-burner gas cooktop.

preliminary HERS rating index: 63



\$403,580

2808 SPRING HOLLOW: NEW, 1 1/2 -story, "Crosby" floor plan: 3098 sqft, 3 bedrooms, 3.5 bathrooms, 3-car garage, spacious family room with floor to ceiling stone fireplace, upstairs loft & media room, stain grade executive study, large covered patio w/fireplace. Granite tops in kitchen and all bathrooms, hand scraped wood flooring. Stainless appliances, double oven (top oven is convection) & 5-burner gas cooktop. **preliminary HERS rating index: 68**



\$487,045

2813 SPRING HOLLOW: NEW "Trinity" floor plan: 4208 sqft, 5 bedrooms, 4 bathrooms, split 3-car garage, spacious family room with floor to ceiling stone fireplace, stain grade executive study, media room, large covered patio with fireplace. Granite tops in kitchen and all bathrooms, hand scraped wood flooring. Stainless appliances, double oven (top oven is convection) & 5-burner gas cooktop.

preliminary HERS rating index: 63





**GREENSMART
PRODUCTS
INSTALLED IN
EVERY HOMES**

Amana 1600 Series
HVAC* (limited lifetime
warranty)

Variable Speed
Technology

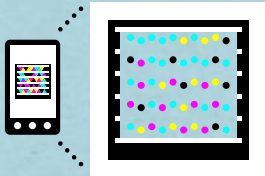
VINYL Super Heat
Blocking New
Generation Low E 240
Windows

Radiant Barrier under
Roof Decking

Fresh Air Supply
(Mechanical Air)

R-44 blown in high
density cellulose
insulation in attic

- R-17 Exterior Wall System:
- R-13 high density cellulose insulation in the exterior wall
 - R-2 Green Guard Structural Sheathing
 - R-2 New Generation Tyvek Therma Wrap (whole house air, moisture & radiant barrier)



Get the free mobile app for your phone
<http://gettag.mobi>



How to compare Green Builders

not all Green Builders are equal



Compare HERS ratings

the lower the HERS rating, the more you save!

What is a HERS Rating?

A HERS rating will very soon become a standard part of every real estate listing allowing buyers to directly compare the efficiency of one home to another (similar to the way they compare MPG when shopping for a car). A home energy rating involves an analysis of a home's construction plans and onsite inspections. Based on the home's plans, the Home Energy Rater uses an energy efficiency software package to perform an energy analysis of the home's design. This analysis yields a projected, pre-construction HERS Index. The rater conducts onsite inspections, typically including a blower door test (to test the leakiness of the house) and a duct test (to test the leakiness of the ducts). Results of these tests, along with inputs derived from the plan review, are used to generate the HERS Index score for the home (source: energystar.gov).

**TURN PAGE
OVER TO
SEE HERS
RATINGS**

**the lower the
HERS rating**

means you save

Big

**see real homeowner
electric bills on our
website or in our
homes!**

Compare our HERS ratings to Environments for Living Program standards marketed by other builders		
Gold Level	Platinum Level	Certified Green Level
85	70	80

All dimensions are approximate. Sales materials, features, subject to change without notice. *SEER ratings industry wide may vary based on equipment & other variables. revised 1/28/12